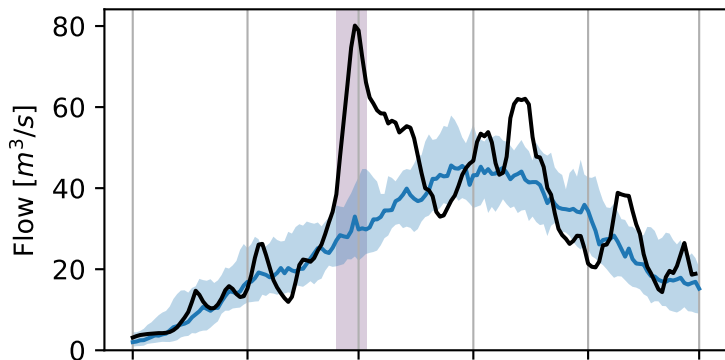


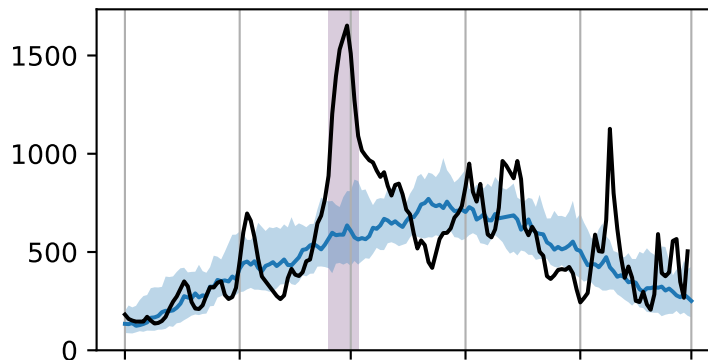
BRIDGE RIVER (SOUTH BRANCH)

a) BELOW BRIDGE GLACIER  
Glacier coverage = 59.1%



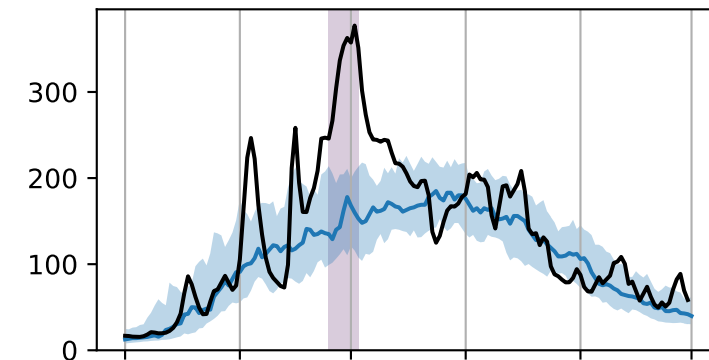
b) HOMATHKO RIVER AT THE MOUTH

Glacier coverage = 19.2%

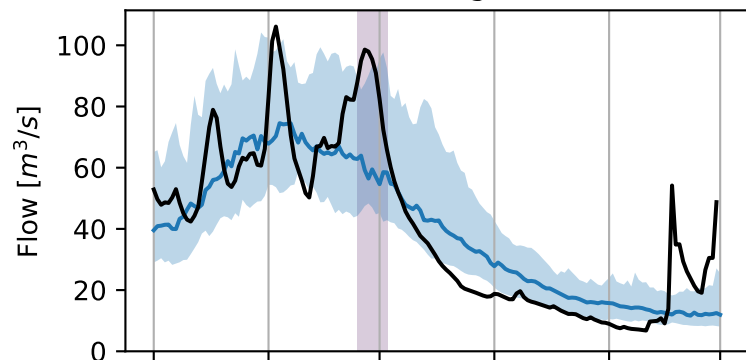


c) NORTH SASKATCHEWAN RIVER

AT WHIRLPOOL POINT  
Glacier coverage = 12.3%

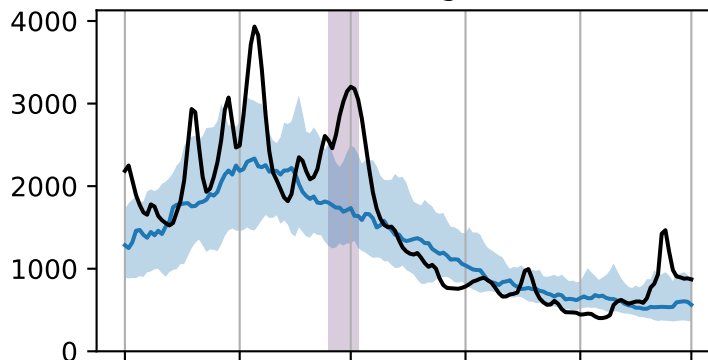


d) CHILLIWACK RIVER  
ABOVE SLESSE CREEK  
Glacier coverage = 1.3%



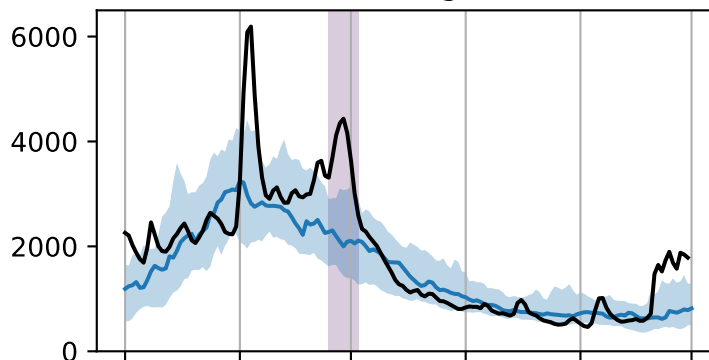
e) FRASER RIVER AT SHELLEY

Glacier coverage = 1.8%

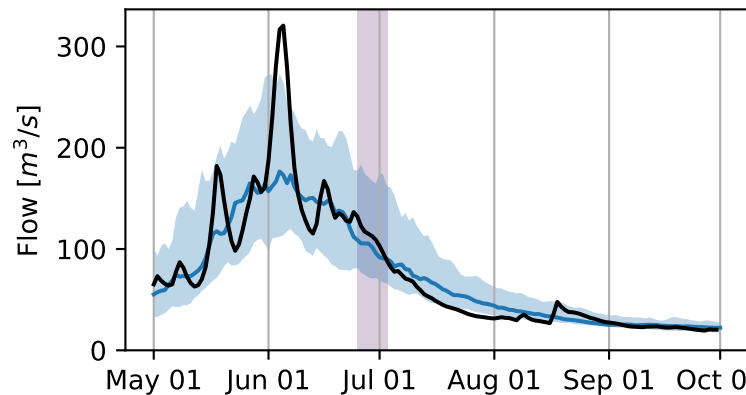


f) SKEENA RIVER AT USK

Glacier coverage = 0.8%

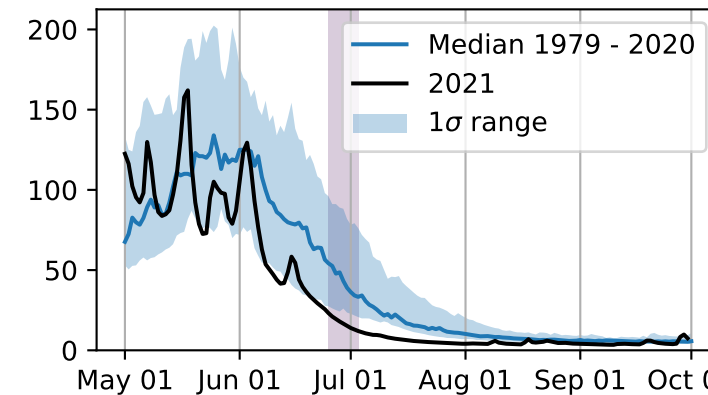


g) ELK RIVER AT FERNIE  
Glacier coverage = 0.3%



h) SALMO RIVER NEAR SALMO

Glacier coverage = 0.0%



i) OYSTER RIVER

BELOW WOODHUS CREEK  
Glacier coverage = 0.1%

